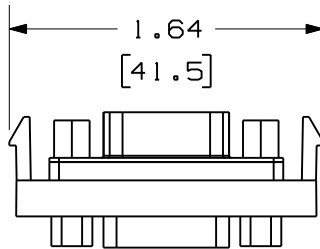


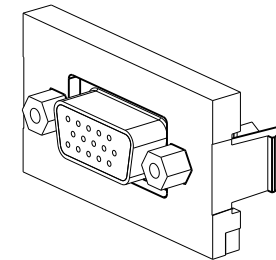
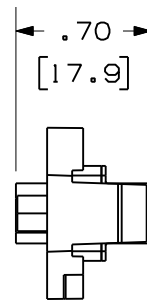
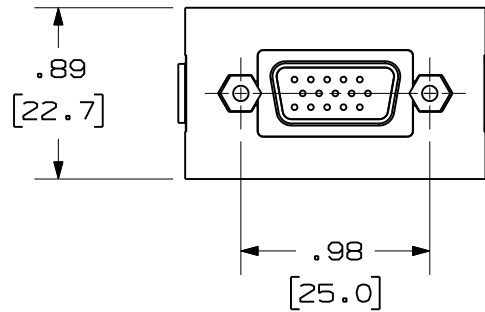
THIS COPY IS PROVIDED ON A RESTRICTED BASIS AND IS NOT TO BE USED IN ANY WAY DETRIMENTAL TO THE INTERESTS OF PANDUIT CORP.

PANDUIT P/N	WEIGHT
CHD15HDC**	.28 LB/10 PCS
IAPHD15HDCWH	(125.9 g/10 PCS)



NOTES:

1. SEE CURRENT CATALOG FOR ADDITIONAL PART NUMBER SUFFIXES TO INDICATE COLOR AND OR PACKAGE QUANTITY.
2. SEE CATALOG FOR COMPLETE LIST OF PARTS APPLICABLE FOR USE WITH THIS PART.
3. DIMENSIONS IN PARENTHESES ARE IN METRIC.
4. PART TO WORK WITH ALL PANDUIT FACEPLATE FRAMES.



MODEL FILENAME	SIZE
DRAWING FILENAME	A
M01095AB_DC/02B	
MINI-COM 15 PIN HIGH DENSITY SVGA 1/3 INSERT COUPLER CUSTOMER DRAWING	
<b>PANDUIT</b> <sup>®</sup> TINLEY PARK, IL 60487	I.I. NUMBER
	PRODUCT SPEC/ PKG SPEC
	ASSY METHOD/ TEST METHOD
	SCALE
	NONE
	PART NO.
	SEE TABLE
	DRAWING NO.
	01095-07

REV	DATE	BY	CHK	DESCRIPTION	ECN	R	CUST	SUP	OTH
2	6-6-11	BJN		B. ADDED SUPPLEMENTAL P/N IAPHD15HDCWH	01095-07				
1	2-16-01	JsP	PBD	A. ADDED "C" TO PART NO.	01095-07	PBD	PBD		
R	1-26-01	JsP	PBD	RELEASED TO PRODUCTION.	01095-07	PBD			

THIRD ANGLE PROJECTION

ALL DIMENSIONS ARE GIVEN IN INCHES, UNLESS OTHERWISE SPECIFIED.

DIMENSIONAL TOLERANCES ARE:  
 (.X) ± (.XXX) ±.010(.3)  
 (.XX) ±.03(.8) ANGLES ±

DRAWN BY JsP

DATE 1-26-01

CHK'D PBD

REVIEW DRAWING NUMBERS

MAT'L