

chipKIT™ Cmod™ Reference Manual

Revised April 15, 2016

This manual applies to the chipKIT Cmod rev. E

Overview

The chipKIT Cmod is a chipKIT/MPIDE compatible board from Digilent. It combines a Microchip[®] PIC32MX150F128D microcontroller with a convenient 600-mil, 40-pin DIP package and two Digilent Pmod connectors. Digilent's Cmod boards are ideally suited for breadboards or other prototype circuit designs where the use of small surface mount packages is impractical.

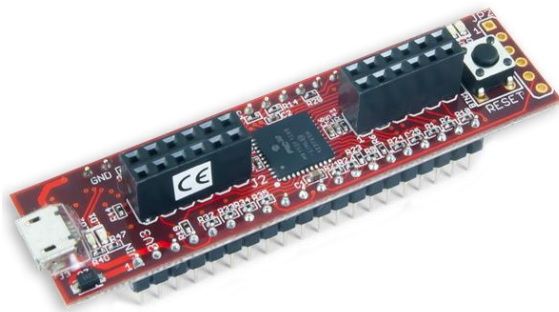
The chipKIT Cmod takes advantage of the powerful PIC32MX150F128D microcontroller. This microcontroller features a 32-bit MIPS processor core running at 40MHz, 128K of flash memory, and 32K of SRAM data memory.

The chipKIT Cmod can be programmed using the Multi-Platform Integrated Development Environment, MPIDE, an environment based on the open source Arduino[®] IDE modified to support the PIC32 microcontroller. The board provides everything needed to start developing embedded applications using the MPIDE.

The chipKIT Cmod is also fully compatible with the advanced Microchip MPLAB[®] IDE. To develop embedded applications using MPLAB[®], a separate device programmer/debugger, such as the Digilent chipKIT PGM or the Microchip PICKIT[™]3 is required.

Features Include:

- Microchip[®] PIC32MX150F128D microcontroller (40/50 Mhz 32-bit MIPS, 128K Flash, 32K SRAM)
- Convenient 600-mil, 2x20-pin DIP package
- 5V – 12V recommended operating voltage
- 33 available I/O pins
- Two user LEDs
- PC connection uses a USB A to micro B cable (not included)
- 13 analog inputs
- 3.3V operating voltage
- Two Pmod ports for Digilent peripheral module boards



The chipKIT Cmod.

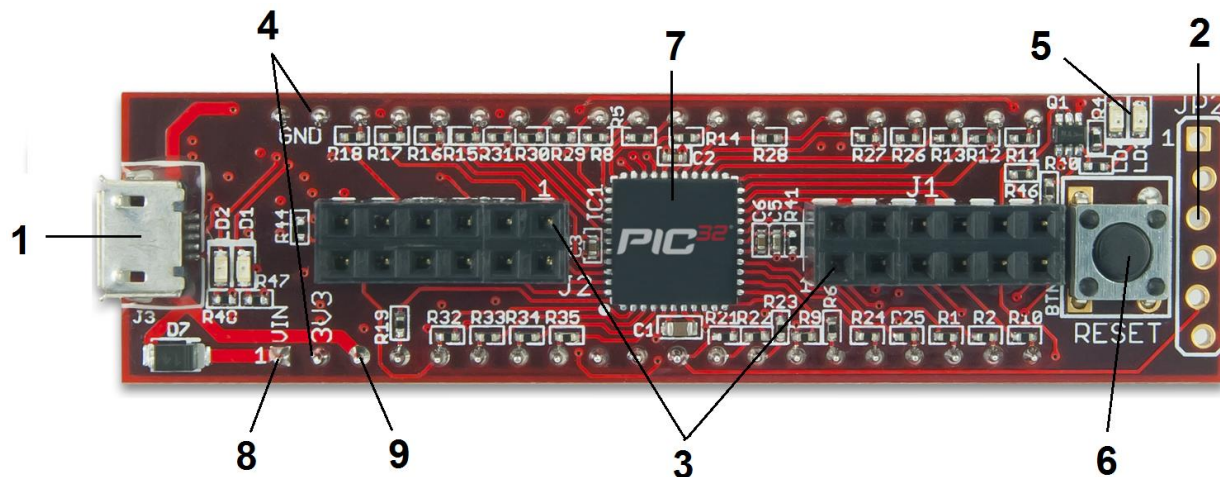
1 Functional Description

The PIC32MX150F128D microcontroller features a 32-bit MIPS processor core capable of running at up to 50 MHz. When used with MPIDE, thechipKIT Cmod operates the microcontroller at 40Mhz by default. The microcontroller features 128 KB of flash program memory and 32 KB of SRAM data memory. Programming the chipKIT Cmod can be done using the Multi-Platform Integrated Development Environment (MPIDE) or with the advanced Microchip MPLAB® IDE with the addition of a PICKit3 or chipKIT PGM in-system programmer/debugger.

The chipKIT Cmod provides 33 I/O pins located on the 40-pin DIP package. Some pins share functions with the onboard circuits such as the on-board LEDs, the UART data lines used by the USB serial converter, or the Pmod ports (see the schematic for details). If these peripherals are needed in the design, then the microcontroller can be reconfigured to allow these pins to be used for other purposes. Thirteen of the digital I/O pins can also be used as analog input pins.

The PIC32MX150F128D microcontroller supports peripheral functions such as UART, SPI, and I²C, as well as pulse-width-modulated outputs. To use the peripheral functions the PIC32MX1xx family of microcontrollers features a mappable I/O system called peripheral pin select (PPS), which allows select peripheral functionality to be mapped to multiple pins on the device. The default chipKIT Cmod board support files provide a specific mapping of peripheral functions to microcontroller pins. This default pin mapping can be over-ridden by the user's sketch if a different mapping is desired.

1.1 ChipKIT Cmod Hardware Overview



Call Out	Component Description	Call Out	Component Description
1	J3 USB Connector for USB Serial Converter	6	Reset Button
2	JP2 Microchip ICSP Connector	7	PIC32 Microcontroller
3	J1-J2 Digilent Pmod ports	8	DIP Pin 1 External Power Connector
4	40 Pin DIP connector	9	DIP Pin3 USB 5.0V Power Connector
5	User LEDs		

2 Programming Tools

The chipKIT Cmod can be used with either MPIDE or the Microchip MPLAB development environment. When used with the MPLAB IDE, in-system programming and debugging of firmware running on the PIC32MX150 microcontroller is supported using an external programming/debugging circuit licensed from Microchip, such as the chipKIT PGM or the PICKit 2/3.

The chipKIT Cmod is immediately usable with either the MPLAB IDE or MPIDE.

2.1 MPIDE and USB Serial Communications

The chipKIT Cmod board is designed to be used with the Multi-Platform IDE (MPIDE). The MPIDE development platform was created by modifying the Arduino IDE. It is backwards-compatible with the Arduino IDE.

The MPIDE uses a serial communications port to communicate with a boot loader running on the chipKIT Cmod board. The serial port on the board is implemented using an FTDI FT232R USB serial converter. Before attempting to use the MPIDE to communicate with the board, the appropriate USB device driver must be installed.

The chipKIT Cmod uses a standard micro-USB connector for connection to a USB port on the PC. A USB-A to Micro-B cable, not supplied, is used to connect the board to a USB port on the host computer.

When the MPIDE needs to communicate with the chipKIT Cmod board, the board is reset and starts running the boot loader. The MPIDE then establishes communications with the boot loader and downloads the program to the board.

When the MPIDE opens the serial communications connection on the PC, the DTR pin on the FT232R chip is driven low. This pin is coupled through a capacitor to the MCLR pin on the PIC32 microcontroller. Driving the MCLR line low resets the microcontroller, restarting execution with the boot loader. See the net labeled P32_RST in the schematic for further detail about this connection. The P32_RST net is also brought out to DIP pin 9.

Two red LEDs (LD1 and LD2) will blink when data is being sent or received between the chipKIT Cmod and the PC over the serial connection.

2.2 Microchip Development Tool Compatibility

In addition to being used with the MPIDE, the chipKIT Cmod board can be used as a more traditional microcontroller development board using Microchip's MPLAB development tool.

Unloaded connector JP2 on the right side of the reset button is used to connect to a Microchip development tool, such as the chipKIT PGM or the PICKit 3. The holes for JP2 are staggered so that a standard 100-mil spaced 6pin header can press fit to the board without the need to solder it in place. Any Microchip development tool that supports the PIC32 microcontroller family can be used.

Typically, a right-angle male connector is used in JP2 so that the programmer can be attached coplanar with the chipKIT Cmod. The connector can be loaded from the top or the bottom. In either case, the programmer will be upside-down while the chipKIT Cmod board is upright (button, LEDs, and Pmod port visible). Ensure that pin 1 on the programmer is connected to the square solder pad on JP2. In some cases, because of mechanical clearance limitations, it may be necessary to use a 6-wire cable to connect a programmer to the chipKIT Cmod board.

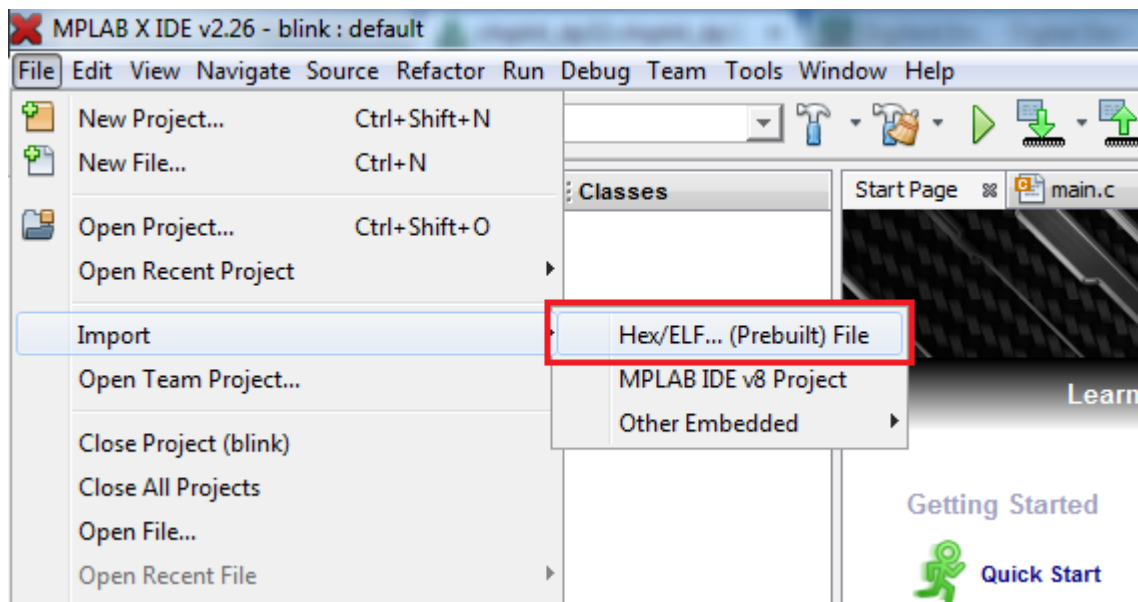
The Microchip MPLAB IDE or the MPLAB X IDE can be used to program and debug code running on the chipKIT Cmod board. These programs can be downloaded from the Microchip website.

2.3 Reloading the Boot Loader

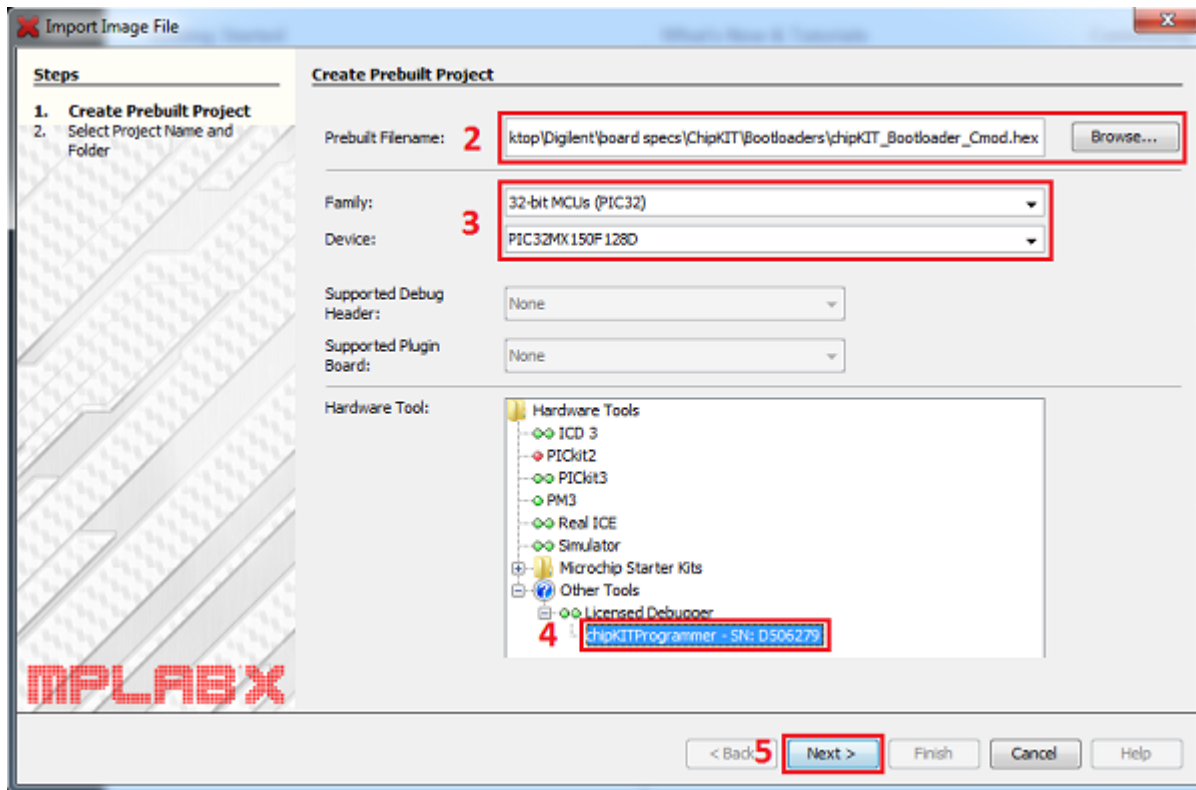
Using the Microchip development tools to program the board will cause the boot loader to be erased. To use the board with the MPIDE again, it is necessary to program the boot loader back onto the board. The boot loader compiled image can be found on the chipKIT Cmod product page on the Digiilent website. The source code project for the boot loader is available on the Git server at github.com.

To reprogram the boot loader using MPLAB X, perform the following steps.

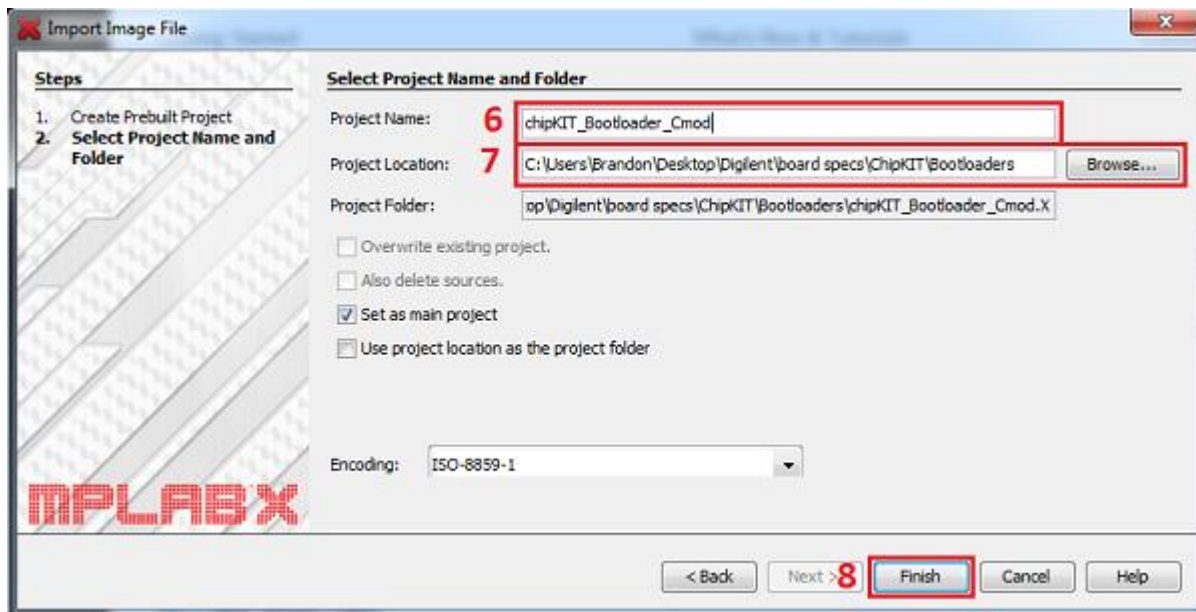
1. Open MPLAB X, click on "File", highlight "Import", then select "HEX/ELF...(Prebuilt) File"



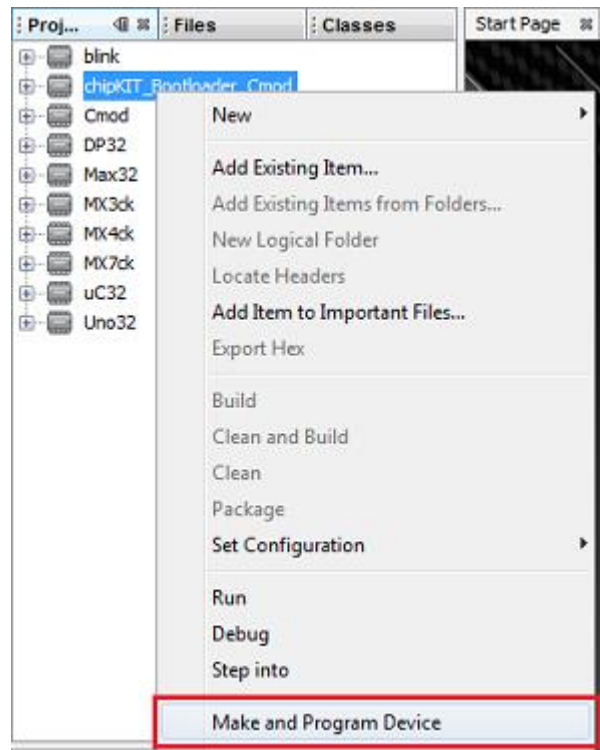
2. Under "Prebuilt Filename", click on the "Browse" button to locate the boot loader file that you downloaded previously. The file name should be something like "chipKIT_Bootloader_Cmod.hex".
3. Select "32-bit MCUs (PIC32)" in the "Family:" dialog box, then select the device ID "PIC32MX150F128D" in the "Device:" dialog box.
4. With your board connected to the programmer and the programmer connected via USB cable to your PC, the programmer SN will load automatically under "Licensed Debugger" in the dialog box.
5. Click the "Next" button at the bottom.



6. Rename the project if you wish. The name of the .hex file is used by default.
7. Choose where to place your project. The file where your boot loader is located is used by default.
8. Click "Finish" to finalize the project file. The project will pop up in "Projects" tab on the left side of the screen.



9. Right-click the project name and select "Make and Program Device". The boot loader will now load to the Cmod. (You may also click the button on the tool bar with the green arrow pointing down to load the project if the project has been set as the main project.)



3 Power Supply

The chipKIT Cmod is designed to be powered via USB (J3) or from an external power supply connected to pin 1 of the DIP package.

The chipKIT Cmod has a single voltage regulator which regulates either 5V from USB, or a maximum of 15V external voltage. A series diode between the DIP pin 1 (VIN) and DIP pin 3 (USB5V0) prevents an external voltage applied to pin 1 being fed back onto the USB 5V supply when powering the board via DIP pin 1. All power supply options are regulated to 3.3 V to provide power to the VCC3V3 bus that powers the PIC32 microcontroller. The output of the on-board 3.3V regulator is available at DIP pin 2 and can be used to power external circuitry.

The 3.3V regulator is a Microchip MCP1703. The regulator is rated for a maximum output current of 250mA. The absolute maximum input voltage for the MCP1703 is 16V. This regulator has internal short circuit protection and thermal protection. It will get noticeably warm when the current consumed by the VCC3V3 bus is close to the 250mA maximum.

4 5V Compatibility

The PIC32 microcontroller operates at 3.3V. There are two issues to consider when dealing with 5V compatibility for 3.3V logic. The first is protection of 3.3V inputs from damage caused by 5V signals. The second is whether the 3.3V output is high enough to be recognized as a logic high value by a 5V input. When driving a high impedance input (typical of CMOS logic), the output high voltage from the PIC32 microcontroller will be close to 3.3V. Some 5V devices will recognize this voltage as a logic high input, and some won't. Many 5V logic devices will work

reliably with 3.3V inputs. Please check the datasheet for the 5V components you are using to ensure that 3.3V will satisfy the logic high conditions for the components.

Some of the digital I/O pins on the PIC32 microcontroller are 5V tolerant. The analog capable I/O pins are not 5V tolerant. The following pins are 5V tolerant: 4-11, 14-15, 27, 31, and 33-38. The other pins are not 5V tolerant and 5V signals should not be applied to those pins. All I/O pins have a 200 ohm resistor in series between the microcontroller pin and the connector pins to provide short circuit protection. These resistors will limit the output drive strength of the pins to approximately +/- 2mA.

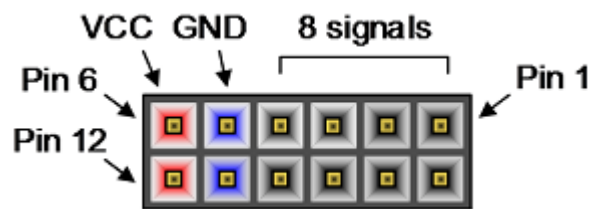
5 Pmod Ports

The chipKIT Cmod has two ports for connecting Digilent Pmods. The Pmod ports, labeled J1 and J2, are 2x6, female pin header connectors.

The Pmod ports on the chipKIT Cmod are both twelve-pin ports. The ports use standard pin headers with 100-mil spaced pins. The twelve-pin ports have the pins in a 2x6 configuration.

The twelve-pin ports provide eight I/O signals, two 3.3V power pins, and two ground pins. The twelve-pin ports have the signals arranged so that one twelve-pin port is equivalent to two of the six-pin ports. Pins 1–4 and 7–10 are the signal pins, pins 5 and 11 are the ground pins, and pins 6 and 12 are the power supply pins.

The pin numbering that Digilent uses on the twelve-pin Pmod ports is non-standard.



The upper row of pins are numbered 1–6, right to left (when viewed from the end of the port), and the lower row of pins are numbered 7–12, right to left. This is in keeping with the convention that the upper and lower rows of pins can be considered to be two six-pin ports stacked.

It is important to note that the Pmod ports on the chipKIT Cmod are rotated 180 degrees in relation to each other. Pin 1 of each Pmod port is marked on the board. When viewing the top of the board, pin 1 of Pmod port J2 is the upper right pin, and pin 7 is immediately below it. For Pmod port J1, pin 1 is in the lower left corner and pin 7 is immediately above it. Connecting peripheral modules incorrectly could result in damaging the peripheral module or the chipKIT Cmod.



See the attached pinout diagram and tables in the appendices for more information about connecting peripheral modules and other devices to the chipKIT Cmod. These tables describe the mapping between pins on the PIC32MX150F128D microcontroller and the pins on the connectors.

6 Input/Output Connections

The chipKIT Cmod board provides 33 of the I/O pins from the PIC32MX150F128D microcontroller to pins on the DIP connector.

The chipKIT Cmod and the MPIDE system uses logical pin numbers to identify digital I/O pins. All digital I/O pins share their numbering with their DIP connector pin. Valid pin numbers on the chipKIT Cmod are 4-8, 10-27, and 29-38. Pin numbers 1-3 and 39-40 refer to pins connected to power buses on the board and are not available for use as I/O. Pin 9 can be used to reset the PIC32 microcontroller and pin 28 is unconnected. In addition, several of these I/O pins share functionality with other devices on the board. See the attached pinout tables for more information.

The DIP connector uses standard DIP package pin numbers. Pins 1- 20 count up from the square pad labeled '1' on the lower DIP connector. Pins 21-40 count up from the pin near the label 'Q1' to the pin labeled 'GND' on the other DIP connector.

Pins 18 and 19 are normally the reference voltages for the microcontroller's A/D converter, but can also be used as digital I/O pins.

In addition to the connector pin, Pin 14 is also connected to the user LED LD3. Pin 12 also connects to the user LED LD4.

In addition to digital I/O, there are analog inputs available on the board, called A0 through A12. These pins are shared with digital pins 12, 13, and 16 through 26. Refer to the attached pinout tables for the correct mapping of these signals.

7 Peripheral I/O Functions

The PIC32 microcontroller on the chipKIT board provides a number of peripheral functions. The following peripherals are provided:

I²C: Synchronous serial interface. The I2C1 interface is available on pins 4 (SDA1) and 38 (SCL1). The I2C2 interface is available on pins 22(SDA2) and 23(SCL2). Note that when using MPIDE, the only available I²C interface is I2C1.

Note: The I²C bus uses open collector drivers to allow multiple devices to drive the bus signals. This means that pull-up resistors must be provided to supply the logic high state for the signals. These pull-up resistors are not on the chipKIT Cmod board and must be provided externally. The required resistance of the pull-up resistor to use depends on the total number of devices on the bus, the length of wire, and the clock speed being used. It essentially depends on distributed capacitance on the bus. The higher the distributed capacitance and the faster the clock speed, the smaller the resistance should be. Values typically used are in the range of 2K to 10K ohms.

User LEDs: Pins 12 (LD4) and 14 (LD3). Both Pin 12 and Pin 14 are shared between a connector pin on the chipKIT Cmod and an LED. Driving the pin high turns the LED on, driving it low turns it off.

External Interrupts: Only INTO is hard-mapped on the microcontroller. It is connected to Pin 37 of the chipKIT Cmod. The other external interrupts are accessible via PPS described below.

A/D Converter Reference: Pin 18 is used to provide an external voltage reference to determine the input voltage range of the analog pins. The maximum voltage that can be applied to this pin is 3.3V. This pin can also be used as digital pin 18.

Reset: The PIC32 microcontroller is reset by bringing its MCLR pin low. The MCLR pin is connected to the P32_RST net on the circuit board. A reset button is located on the right side of the board. Pressing this button resets the PIC32 microcontroller.

Reset of the PIC32 microcontroller can be initiated by the USB serial converter. The USB serial converter brings the DTR pin low to reset the microcontroller. The P32_RST net is connected to Pin 9 of the DIP package. This allows external circuitry to reset the microcontroller, or to ensure that the circuitry is reset at the same time as the microcontroller.

8 Peripheral Pin Select

An advanced feature of the PIC32MX1xx/2xx families of microcontrollers is the ability to re-map the locations of peripheral devices. This advanced feature is available only in MPLAB IDE or MPLAB X. For more detailed information, refer to the PIC32MX1XX/2XX Data Sheet available from www.microchip.com.

The PPS Peripherals are pre-assigned to the following pins when programming the chipKIT Cmod with MPIDE. These assignments are also included in the Notes sections of the attached pinout tables.

Output Compare: Pin 29 (OC1), Pin 38 (OC2), Pin 4 (OC3), Pin 22 (OC4), Pin 13 (OC5). Output compare allows for the implementation of pulse width modulated (PWM) signals using the analogWrite() function.

Input Capture: Pin 36 (IC1), Pin 10 (IC2), Pin 31 (IC3), Pin 37 (IC4), Pin 25 (IC5). Input capture allows for the synchronization of timers with captured signals, along with the execution of interrupts.

External Timer Input: Pin 30 (TCK1), Pin 18 (TCK2), Pin 27 (TCK3), Pin 32 (TCK4), Pin 26 (TCK5) allows for timers to be clocked from external sources.

External Interrupt: Pin 33 (INT1), Pin 13 (INT2), Pin 7 (INT3), Pin 37 (INT4) allows for external interrupts to be triggered in their own ISRs. Interrupts may be edge triggered or level triggered, though only one of rising, falling, high, or low, may be chosen for trigger sensitivity.

Change Notice Pins: All change notice pins are matched with their chipKIT pin numbers (e.g. CN4 is associated with Pin 4). There is a change notice pin for each I/O pin.

UART: Asynchronous serial port. Pin 23 (U1TX), Pin 5 (U1RX). These pins use UART1 on the PIC32 microcontroller and are connected to the FT232RQ serial converter. It is possible to use these pins to connect to an external serial device when not using the USB serial interface. Pin 20 (U2TX) and Pin 21 (U2RX) are used to implement UART2 on the PIC32 microcontroller.

SPI: Synchronous serial port. Pin 24 (SS), Pin 35 (MISO), Pin 25 (MOSI), Pin 16 (SCK). This uses SPI1 on the PIC32 Microcontroller. SPI2 is implemented as Pin 33 (SS), Pin 36 (MOSI), Pin 32 (MISO), and Pin 17 (SCK).

When using the chipKIT Cmod with MPIDE, the SPI ports are accessed using either the standard chipKIT SPI library or using the Digiilent DSPI library. The standard SPI library supports access to a single SPI port, SPI1. This is accessed using the SPI object.

The DSPI library supports access to both SPI ports. The DSPI0 object class is used to access the default SPI port, SPI1. The DSPI1 object class is used to access SPI2.

Appendices

The following tables give the relationship between the chipKIT digital pin numbers, the connector pin numbers, and the microcontroller pin numbers.

In the following tables, columns labeled chipKIT pin # refer to the digital pin number. This is the value that is passed to the pinMode(), digitalRead(), digitalWrite(), and other functions to refer to the pin.

The signals mapped by using Peripheral Pin Select are included in the following tables. They are listed with the default pins assigned to them when using MPIDE. If the locations of peripheral devices are re-mapped, these signals may no longer be associated with the same pin as listed below.

Appendix A: Pinout Diagram

chipKIT™ Cmod Rev E

Flash 128 kB
RAM 32 kB

Inputs are 3.3V tolerant.
* indicates 5V tolerant.

Hardware
Pin number
PIC32 Register ID
Pmod Connector

PC
TimerSerial
SPI

analogRead()
digitalRead() and digitalWrite()
digitalRead(), digitalWrite() and analogWrite()

Rei Vilo, 2012-2015
embeddedcomputing.weebly.com
version 0.9 2015-02-24 **BETA**
edited by: Brandon Marcum, Digilent Inc.

VIN			1	
+3.3V			2	
+5V			3	
SDA(1)	RB09		4*	
RX(1)	RC06		5*	
	J1-08	RC07	6*	
	J1-07	RC08	7*	
	J1-10	RC09	8*	
RESET			9	
	RB10		10*	
	RB11		11*	
LED4	RB12	A12	12	
	RB13	A11	13	
LED3	RA10		14*	
	RA07		15*	
SCK(1)	J1-04	RB14	A10	16
SCK(2)	J2-10	RB15	A9	17
AREF		RA00	A0	18
		RA01	A1	19
TX(2)	J2-02	RB00	A2	20



40			GND	
39			GND	
38	RB08		SCL(1)	
37*	RB07			
36*	RB06	J2-08	MOSI(2)	
35*	RB05	J1-03	MISO(1)	
34*	RC05	J2-04		
33*	RC04	J2-07	CS(2)	
32*	RC03	J2-09		
31*	RA09			
30	RA04	JA-09		
29	RB04		SCL(2)	
28			NC	
27*	RA08			
26	A8	RC02		
25	A7	RC01	J1-02	MOSI(1)
24	A6	RC00	J1-01	CS(1)
23	A5	RB03		TX(1)
22	A4	RB02	J2-01	SDA(2)
21	A3	RB01	J2-03	RX(2)

Appendix B: Pinout Table by DIP Connector/ChipKIT Pin Number

DIP Pin #	chipKIT Pin #	Connector Pin #	PIC32 Pin #	PIC32 Signal	Notes
1	-	-	-	N/A	VIN/External Power
2	-	-	28/40	VDD	VCC3V3
3	-	-	-	N/A	USB5V0/External 5V Power for USB
4	4	-	1*	RPB9/SDA1/CTED4/PMD3/RB9	OC3
5	5	-	2*	RPC6/PMA1/RC6	U1RX
6	6	J1-08	3*	RPC7/PMA0/RC7	
7	7	J1-07	4*	RPC8/PMA5/RC8	INT3
8	8	J1-10	5*	RPC9/CTED7/PMA6/RC9	
9	-	-	18*	MCLR	RESET
10	10	-	8*	PGED2/RPB10/CTED11/PMD2/RB10	IC2
11	11	-	9*	PGEC2/RPB11/PMD1/RB11	
12	12/A12	-	10	AN12/PMD0/RB12	LD4
13	13/A11	-	11	AN11/RPB13/CTPLS/PMRD/RB13	OC5/INT2
14	14	-	12*	PGED(4)/TMS/PMA10/RA10	LD3
15	15	-	13*	PGEC(4)/TCK/CTED8/PMA7/RA7	
16	16/A10	J1-04	14	CVREF/AN10/C3INB/RPB14/SCK1/CTED5/PMWR/RB14	
17	17/A9	J2-10	15	AN9/C3INA/RPB15/SCK2/CTED6/PMCS1/RB15	
18	18/A0	-	19	VREF+/CVREF+/AN0/C3INC/RPA0/CTED1/RA0	TCK2
19	19/A1	-	20	VREF-/CVREF-/AN1/RPA1/CTED2/RA1	
20	20/A2	J2-02	21	PGED1/AN2/C1IND/C2INB/C3IND/RPB0/RB0	U2TX
21	21/A3	J2-03	22	PGEC1/AN3/C1INC/C2INA/RPB1/CTED12/RB1	U2RX
22	22/A4	J2-01	23	AN4/C1INB/C2IND/RPB2/SDA2/CTED13/RB2	OC4
23	23/A5	-	24	AN5/C1INA/C2INC/RTCC/RPB3/SCL2/RB3	U1TX
24	24/A6	J1-01	25	AN6/RPC0/RC0	SS1
25	25/A7	J1-02	26	AN7/RPC1/RC1	IC5/SDO1
26	26/A8	-	27	AN8/RPC2/PMA2/RC2	TCK5
27	27	-	32*	TDO/RPA8/PMA8/RA8	TCK3
28	-	-	-	-	Not connected
29	29	-	33	SOSCI/RPB4/RB4	OC1
30	30	J1-09	34	SOSCO/RPA4/T1CK/CTED9/RA4	TCK1
31	31	-	35*	TDI/RPA9/PMA9/RA9	IC3
32	32	J2-09	36	RPC3/RC3	TCK4/SDI2

33	33	J2-07	37*	RPC4/PMA4/RC4	INT1/SS2
34	34	J2-04	38*	RPC5/PMA3/RC5	
35	35	J1-03	41*	PGED3/RPB5/PMD7/RB5	SDI1
36	36	J2-08	42*	PGEC3/RPB6/PMD6/RB6	IC1/SDO2
37	37	-	43*	RPB7/CTED3/PMD5/INT0/RB7	IC4/INT4
38	38	-	44*	RPB8/SCL1/CTED10/PMD4/RB8	OC2
39/40	-	-	6/16/ 29/39	VSS/AVSS	GND

* Indicates 5V tolerant pin on the PIC32MX150F128D

Appendix C: Pinout Table by Pmod Port Pin Number

Connector Pin #	DIP Pin #	chipKIT Pin #	PIC32 Pin #	PIC32 Signal	Notes
J1-01	24	24/A6	25	AN6/RPC0/RC0	SS1
J1-02	25	25/A7	26	AN7/RPC1/RC1	IC5/SDO1
J1-03	35	35	41*	PGED3/RPB5/PMD7/RB5	SDI1
J1-04	16	16/A10	14	CVREF/AN10/C3INB/RPB14/SCK1/CTED5/PMWR/RB14	
J1-05	39/40	-	6/16/ 29/39	VSS/AVSS	GND
J1-06	2	-	28/40	VDD	VCC3V3
J1-07	7	7	4*	RPC8/PMA5/RC8	INT3
J1-08	6	6	3*	RPC7/PMA0/RC7	
J1-09	30	30	34	SOSCO/RPA4/T1CK/CTED9/RA4	TCK1
J1-10	8	8	5*	RPC9/CTED7/PMA6/RC9	
J1-11	39/40	-	6/16/ 29/39	VSS/AVSS	GND
J1-12	2	-	28/40	VDD	VCC3V3
J2-01	22	22/A4	23	AN4/C1INB/C2IND/RPB2/SDA2/CTED13/RB2	OC4
J2-02	20	20/A2	21	PGED1/AN2/C1IND/C2INB/C3IND/RPB0/RB0	U2TX
J2-03	21	21/A3	22	PGEC1/AN3/C1INC/C2INA/RPB1/CTED12/RB1	U2RX
J2-04	34	34	38*	RPC5/PMA3/RC5	
J2-05	39/40	-	6/16/ 29/39	VSS/AVSS	GND
J2-06	2	-	28/40	VDD	VCC3V3
J2-07	33	33	37*	RPC4/PMA4/RC4	INT1/SS2
J2-08	36	36	42*	PGEC3/RPB6/PMD6/RB6	IC1/SDO2
J2-09	32	32	36	RPC3/RC3	TCK4/SDI2
J2-10	17	17/A9	15	AN9/C3INA/RPB15/SCK2/CTED6/PMCS1/RB15	
J2-11	39/40	-	6/16/ 29/39	VSS/AVSS	GND

J2-12	2	-	28/40	VDD	VCC3V3
-	1	-	-	N/A	VIN/External Power
-	3	-	-	N/A	USB5V0/External 5V Power for USB
-	4	4	1*	RPB9/SDA1/CTED4/PMD3/RB9	OC3
-	5	5	2*	RPC6/PMA1/RC6	U1RX
-	9		18*	MCLR	Reset Button
-	10	10	8*	PGED2/RPB10/CTED11/PMD2/RB10	IC2
-	11	11	9*	PGEC2/RPB11/PMD1/RB11	
-	12	12/A12	10	AN12/PMD0/RB12	LD4
-	13	13/A11	11	AN11/RPB13/CTPLS/PMRD/RB13	OC5/INT2
-	14	14	12*	PGED(4)/TMS/PMA10/RA10	LD3
-	15	15	13*	PGEC(4)/TCK/CTED8/PMA7/RA7	
-	18	18/A0	19	VREF+/CVREF+/AN0/C3INC/RPA0/CTED1/RA0	TCK2
-	19	19/A1	20	VREF-/CVREF-/AN1/RPA1/CTED2/RA1	
-	23	23/A5	24	AN5/C1INA/C2INC/RTCC/RPB3/SCL2/RB3	U1TX
-	26	26/A8	27	AN8/RPC2/PMA2/RC2	TCK5
-	27	27	32*	TDO/RPA8/PMA8/RA8	TCK3
-	28	-	-	-	Not connected
-	29	29	33	SOSCI/RPB4/RB4	OC1
-	31	31	35*	TDI/RPA9/PMA9/RA9	IC3
-	37	37	43*	RPB7/CTED3/PMD5/INT0/RB7	IC4/INT4
-	38	38	44*	RPB8/SCL1/CTED10/PMD4/RB8	OC2

* Indicates 5V tolerant pin on the PIC32MX150F128D

Appendix D: Pinout Table by PIC32 Microcontroller Pin

PIC32 Pin#	DIP Pin #	chipKIT Pin #	Connector Pin #	PIC32 Signal	Notes
1*	4	4	-	RPB9/SDA1/CTED4/PMD3/RB9	OC3
2*	5	5	-	RPC6/PMA1/RC6	U1RX
3*	6	6	J1-08	RPC7/PMA0/RC7	
4*	7	7	J1-07	RPC8/PMA5/RC8	INT3
5*	8	8	J1-10	RPC9/CTED7/PMA6/RC9	
6	39/40	-	-	VSS/AVSS	GND
7				VCAP	
8*	10	10	-	PGED2/RPB10/CTED11/PMD2/RB10	IC2
9*	11	11	-	PGEC2/RPB11/PMD1/RB11	
10	12	12/A12	-	AN12/PMD0/RB12	LD4

11	13	13/A11	-	AN11/RPB13/CTPLS/PMRD/RB13	OC5/INT2
12*	14	14	-	PGED(4)/TMS/PMA10/RA10	LD3
13*	15	15	-	PGEC(4)/TCK/CTED8/PMA7/RA7	
14	16	16/A10	J1-04	CVREF/AN10/C3INB/RPB14/SCK1/CTED5/PMWR/RB14	
15	17	17/A9	J2-10	AN9/C3INA/RPB15/SCK2/CTED6/PMCS1/RB15	
16	39/40	-	-	VSS/AVSS	GND
17				AVDD	
18*	9	-	-	MCLR	RESET
19	18	18/A0	-	VREF+/CVREF+/AN0/C3INC/RPA0/CTED1/RA0	TCK2
20	19	19/A1	-	VREF-/CVREF-/AN1/RPA1/CTED2/RA1	
21	20	20/A2	J2-02	PGED1/AN2/C1IND/C2INB/C3IND/RPB0/RB0	U2TX
22	21	21/A3	J2-03	PGEC1/AN3/C1INC/C2INA/RPB1/CTED12/RB1	U2RX
23	22	22/A4	J2-01	AN4/C1INB/C2IND/RPB2/SDA2/CTED13/RB2	OC4
24	23	23/A5	-	AN5/C1INA/C2INC/RTCC/RPB3/SCL2/RB3	U1TX
25	24	24/A6	J1-01	AN6/RPC0/RC0	SS1
26	25	25/A7	J1-02	AN7/RPC1/RC1	IC5/SDO1
27	26	26/A8	-	AN8/RPC2/PMA2/RC2	TCK5
28	2	-	-	VDD	VCC3V3
29	39/40	-	-	VSS/AVSS	GND
30				OSC1/CLKI/RPA2/RA2	X1, system clock oscillator
31				OSC2/CLKO/RPA3/RA3	X1, system clock oscillator
32*	27	27	-	TDO/RPA8/PMA8/RA8	TCK3
33	29	29	-	SOSCI/RPB4/RB4	OC1
34	30	30	J1-09	SOSCO/RPA4/T1CK/CTED9/RA4	TCK1
35*	31	31	-	TDI/RPA9/PMA9/RA9	IC3
36	32	32	J2-09	RPC3/RC3	TCK4/SDI2
37*	33	33	J2-07	RPC4/PMA4/RC4	INT1/SS2
38*	34	34	J2-04	RPC5/PMA3/RC5	
39	39/40	-	-	VSS/AVSS	GND
40	2	-	-	VDD	VCC3V3
41*	35	35	J1-03	PGED3/RPB5/PMD7/RB5	SDI1
42*	36	36	J2-08	PGEC3/RPB6/PMD6/RB6	IC1/SDO2
43*	37	37	-	RPB7/CTED3/PMD5/INT0/RB7	IC4/INT4
44*	38	38	-	RPB8/SCL1/CTED10/PMD4/RB8	OC2
-	1	-	-	N/A	VIN/External Power
-	3	-	-	N/A	USB5V0/External 5V Power for USB

-	28	-	-	N/A	Not connected
---	----	---	---	-----	---------------

* Indicates 5V tolerant pin on the PIC32MX150F128D