

PIC16F887 Development Kit

Sku: 53301-805



Development Kit Options

Tools Included	w/Compiler	Just H/W	Only PCB
Compiler Software	●		
Programmer	●	●	
Prototyping board	●	●	●
Power supply & cables	●	●	
Prototyping Parts Box	●	●	
Exercise book	●	●	
Price			
Buy Now →	Add	Add	Add

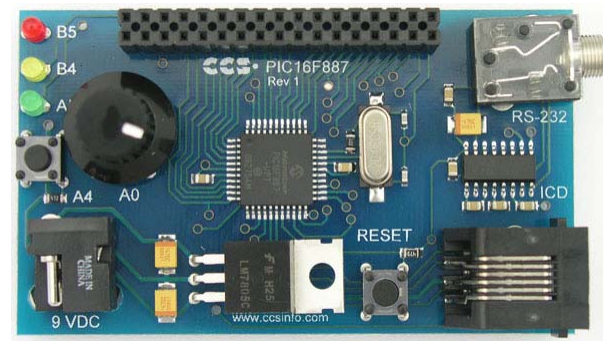
This development kit contains everything you need to begin development with Microchip's PIC[®] PIC16 family. Along with a prototyping board, it includes the powerful PCW Integrated Development Environment with compiler support for Microchip's PIC[®] PIC10, PIC12 and PIC16 families and an ICD-U64 in-circuit programmer/debugger that supports C-aware real time debugging. The prototyping board features a PIC16F887 attached to a potentiometer, RS-232 level converter, pushbutton, three LEDs, and an ICD connector.

PIC16F887 Prototyping Board (Size: 3" x 1.75") includes:

- PIC16F887
- 30 I/O Pins (12 Can Be Analog)
- One Potentiometer
- One Pushbutton
- Three LEDs
- RS-232 Level Converter
- ICD Jack

PIC16F887 Development Kit includes:

- PIC16F887 Prototyping Board
- In-Circuit Debugger/Programmer
- Breadboard
- Parts box with:
 - 93LC56 serial EEPROM chip
 - Jumpers
 - DS1631 digital thermometer chip
 - NJU6355 real-time clock IC with attached 32.768kHz crystal
 - Two digit 7-segment LED module



- Two 1K Ohm resistors
- Exercise Tutorial
- 9V AC Adapter and Cables